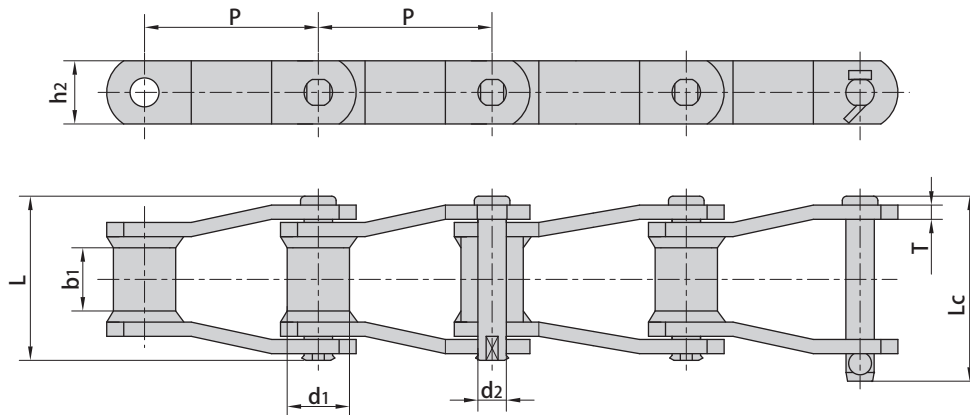


Welded type cranked link chains



Donghua Chain No.	Pitch	Bush diameter	Width between inner plates	Pin diameter	Pin length		Plate depth	Plate thickness	Ultimate tensile strength	Average tensile strength	Weight per meter
	P mm	d1 max mm	b1 min mm	d2 max mm	L max mm	Lc max mm	h2 max mm	T mm	Q min kN/lbf	Q0 kN	q kg/m
WR78 WH78	66.27	22.90	28.40	12.78	73.00	79.3	28.4	6.4	93.4/21227 106.8/24273	102.70 117.50	6.20
WR82 WH82	78.10	31.50	31.80	14.35	80.00	86.0	31.8	6.4	100.1/22750 131.2/29818	110.10 144.30	7.98
WR106 WH106	152.40	37.10	41.20	19.13	103.00	111.0	38.1	9.7	169.0/38409 224.6/51045	185.90 247.00	10.56
WR110 WH110	152.40	32.00	46.70	19.13	107.70	115.5	38.1	9.7	169.0/38409 224.6/51045	185.90 247.00	10.40
WR111 WH111	120.90	37.10	57.20	19.13	116.80	124.5	38.1	9.7	169.0/38409 224.6/51045	185.90 247.00	12.72
WR124 WH124	101.60	37.10	41.20	19.13	103.00	110.0	38.1	9.7	169.0/38409 224.6/51045	185.90 247.00	12.38
WR124H WH124H	103.20	41.70	41.20	22.30	131.60	133.0	50.8	12.7	275.8/62682 355.9/80886	303.30 391.40	19.68
WR132 WH132	153.67	44.70	76.20	25.48	151.00	162.2	50.8	12.7	275.8/62682 378.1/85932	303.30 415.90	20.00
WR150 WH150	153.67	44.45	73.00	25.40	151.00	162.2	63.5	12.7	620.0/140907	682.00	20.50
WR155 WH155	153.67	44.45	73.00	28.57	164.00	176.0	63.5	12.7	820.0/186361	902.00	20.70
WR157 WH157	153.67	44.45	76.20	28.57	164.00	176.0	63.5	15.9	820.0/186361	902.00	20.80
WR78F5 WH78F4	66.27	21.30	20.00	12.70	62.99	66.1	25.4	6.4	66.7/14994 106.8/24009	73.37 117.48	5.00 5.94
WH124F1	101.60	31.75	38.10	19.05	101.50	109.5	38.1	9.5	253.0/56876	278.00	11.40
WH111F1	120.90	36.50	57.20	19.05	120.60	120.6	38.1	9.5	272.0/61148	299.20	12.63

Note: WR - Welded steel chain - only pins & bushes heat treated
WH - Welded steel chain - all heat treated