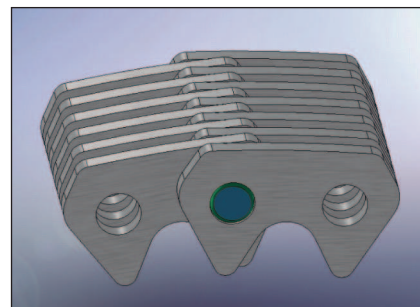
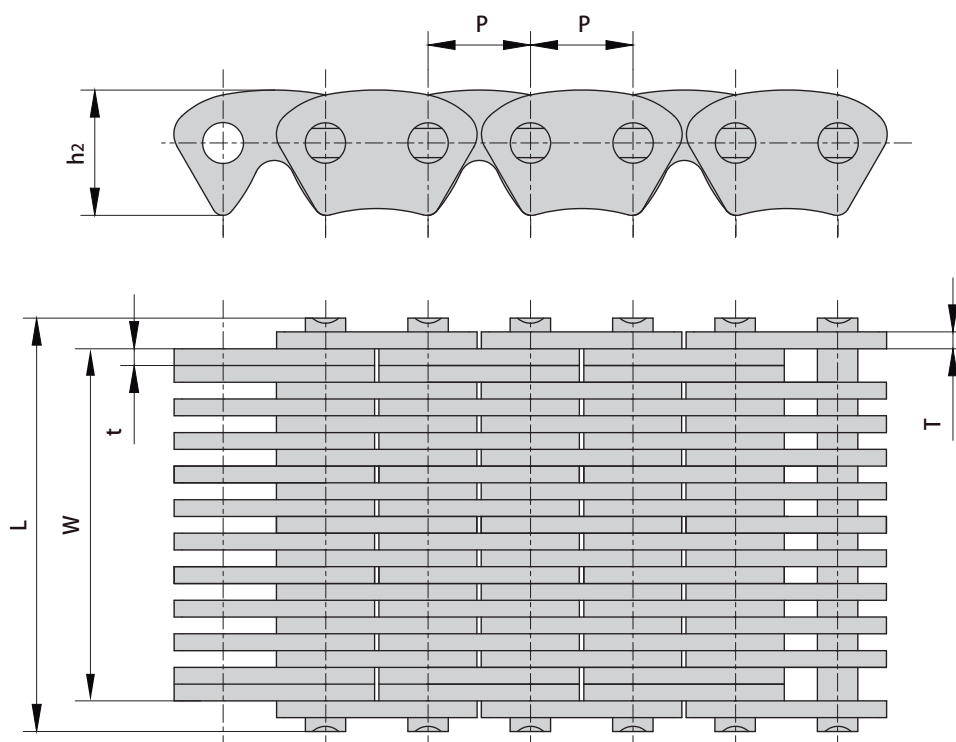


Round pin type silent chains

Round pin type silent chain is mainly used for transfer case and gearbox assembly drive system, which is the core component of the drive system. The chain is made from superior quality steel and the plates of which are austempered, which is especially suitable for various conditions such as high strength, high wear resistance, low noise and big torque etc..



Round pin type silent chains



Donghua Chain No.	Pitch	Width Between Guides	Pin length	Plate depth	Plate thickness		Guide type	Number of plate	Ultimate tensile strength	Weight per meter
	P mm	W mm	L max mm	h2 max mm	t max mm	T max mm		n	Q min kN/lbf	q kg/m
CL06F2-12X11W	9.525	32.55	38.20	11.6	1.55	1.55	Outside	23(12X11)	68/15293	2.2
SC1252-11X10W	12.780	30.00	36.72	15.5	1.55	1.55	Outside	21(11X10)	80/17992	2.8