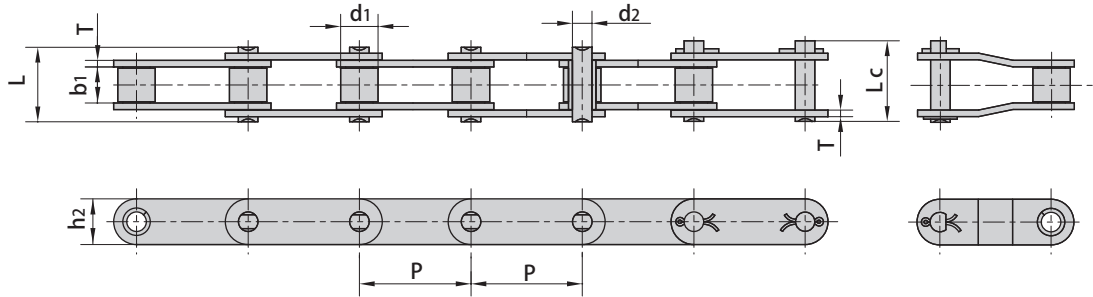
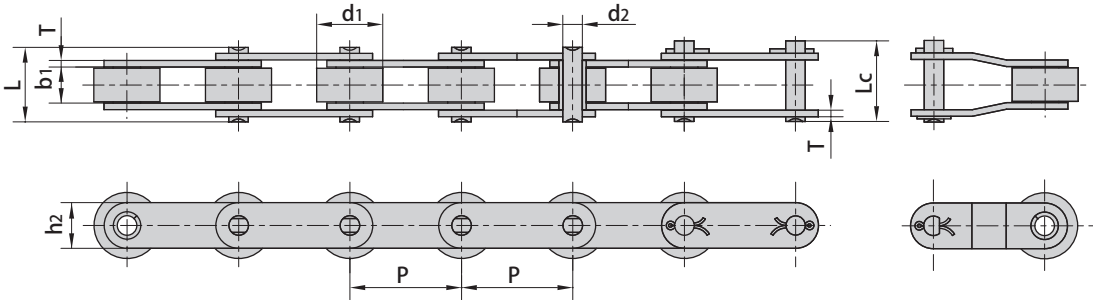


Double pitch conveyor chains

Small Roller Type



Large Roller Type

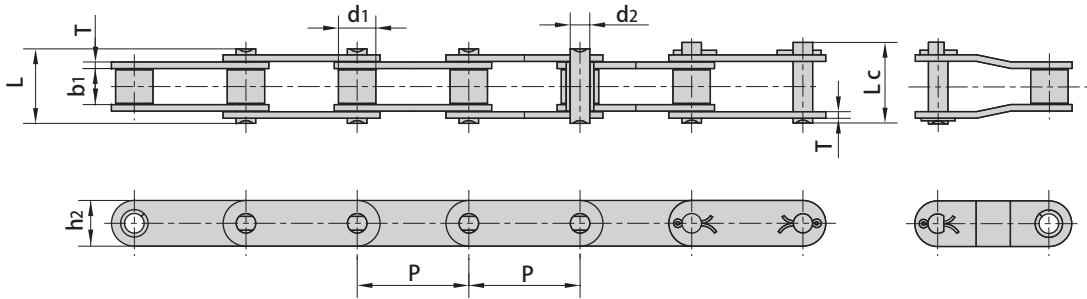


ISO Chain No.	ANSI Chain No.	Pitch	Roller diameter	Width between inner plates	Pin diameter	Pin length		Inner plate depth	Plate thickness	Ultimate tensile strength	Average tensile strength	Weight per meter
		P mm	d1 max mm	b1 min mm	d2 max mm	L max mm	Lc max mm	h2 max mm	T max mm	Q min kN/lbf	Q0 kN	q kg/m
C208A	C2040	25.40	7.95	7.85	3.96	16.6	17.8	12.0	1.50	14.1/3205	16.7	0.50
C208AL	C2042		15.88									0.84
C208AH	C2040H	25.40	7.95	7.85	3.96	18.8	19.9	12.0	2.03	14.1/3205	17.2	0.65
C208B		25.40	8.51	7.75	4.45	16.7	18.2	11.8	1.60	18.0/4091	19.4	0.55
C208BL			15.88									0.89
C210A	C2050	31.75	10.16	9.40	5.08	20.7	22.2	15.0	2.03	22.2/5045	28.1	0.78
C210AL	C2052		19.05									1.27
C212A	C2060	38.10	11.91	12.57	5.94	25.9	27.7	18.0	2.42	31.8/7227	36.8	1.12
C212AL	C2062		22.23									1.61
C212AH	C2060H	38.10	11.91	12.57	5.94	29.2	31.6	18.0	3.25	31.8/7227	41.6	1.44
C212AHL	C2062H		22.23									2.07
C216A	C2080	50.80	15.88	15.75	7.92	32.7	36.5	24.0	3.25	56.7/12886	65.7	2.08
C216AL	C2082		28.58									3.12
C216AH	C2080H	50.80	15.88	15.75	7.92	36.2	39.4	24.0	4.00	56.7/12886	70.0	2.54
C216AHL	C2082H		28.58									3.58
C220A	C2100	63.50	19.05	18.90	9.53	40.4	44.7	30.0	4.00	88.5/20114	102.6	3.01
C220AL	C2102		39.67									4.83
C220AH	C2100H	63.50	19.05	18.90	9.53	43.6	46.9	30.0	4.80	88.5/20114	112.4	3.56
C220AHL	C2102H		39.67									5.38
C224A	C2120	76.20	22.23	25.22	11.10	50.3	54.3	35.7	4.80	127.0/28864	147.3	4.66
C224AL	C2122		44.45									7.66
C224AH	C2120H	76.20	22.23	25.22	11.10	53.5	57.5	35.7	5.60	127.0/28864	160.9	5.26
C224AHL	C2122H		44.45									8.26
C232A	C2160	101.60	28.58	31.75	14.27	64.8	69.6	47.8	6.40	226.8/51545	278.9	8.15
C232AL	C2162		57.15									13.00
C232AH	C2160H	101.60	28.58	31.75	14.27	68.2	73.0	47.8	7.20	226.8/51545	285.8	9.06
C232AHL	C2162H		57.15									13.84

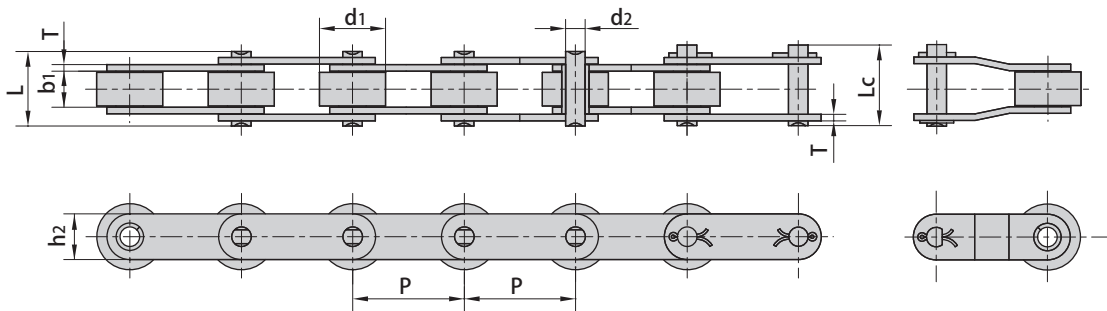
Double pitch conveyor chains

Non-standard double pitch conveyor chains

Small Roller Type



Large Roller Type



Donghua Chain No.	Pitch	Roller diameter	Width between inner plates	Pin diameter	Pin length		Inner plate depth	Plate thickness	Ultimate tensile strength	Average tensile strength	Weight per meter
	P mm	d1 max mm	b1 min mm	d2 max mm	L max mm	Lc max mm	h2 max mm	T max mm	Q min kN/lbf	Q0 kN	q kg/m
C2050F12	31.75	10.16	9.52	5.08	20.2	21.7	15.0	2.03	18.53/4165	20.0	1.05
C2060F28	38.10	11.91	12.57	5.72	25.9	27.7	20.0	2.42	28.90/6496	32.4	1.40
C2080HF1	50.80	15.88	15.75	7.92	36.2	39.4	23.0	4.00	55.60/12499	61.1	2.49
C2080HF51	50.80	18.00	32.00	7.92	54.0	57.5	24.0	4.00	55.60/12499	61.1	2.66
C220AH-BF1	63.50	19.05	18.90	9.53	43.6	46.9	30.0	4.80	86.70/19490	95.5	3.74
C224AHF2	76.20	27.20	25.22	11.10	-	57.5	35.7	5.60	124.60/280112	139.5	5.78
C224AHLF5	76.20	43.00	25.22	11.10	53.5	-	35.7	5.60	124.60/280112	142.6	7.94
C208BF3	25.40	8.51	7.95	4.45	16.7	-	11.8	1.50	10.00/22480	11.5	0.61
212BHF1	38.10	12.07	11.68	5.94	25.2	28.0	40.8	2.42	31.80/7149	36.6	2.73
C212BF2	38.10	12.07	11.68	5.72	22.5	25.5	35.0	1.85	28.90/6496	33.3	1.88
C212BF9	38.10	12.07	11.68	5.72	22.5	25.2	20.0	1.85	28.90/6496	33.3	1.10
216BF4	50.80	15.88	17.90	8.28	36.1	39.1	21.0	3.70	60.00/13488	66.0	1.80
C216BF1	50.80	15.88	17.02	8.28	36.1	39.1	20.0	4.00/3.00	60.00/13488	66.0	2.01
220BF1	63.50	19.05	19.56	10.19	36.5	37.6	27.0	3.00	65.00/14612	74.7	1.81