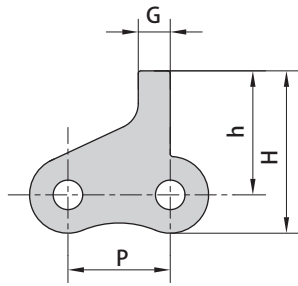
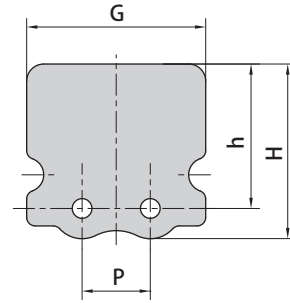


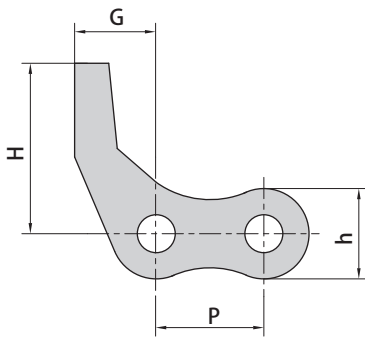
## Conveyor chain special attachments (B series)



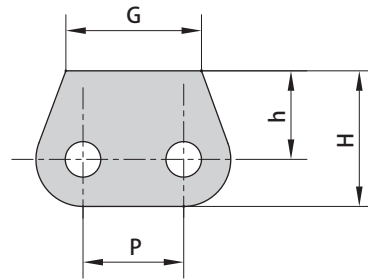
Donghua Chain No.	P mm	H mm	h mm	G mm
05BF4	8	12.7	9.7	2.5



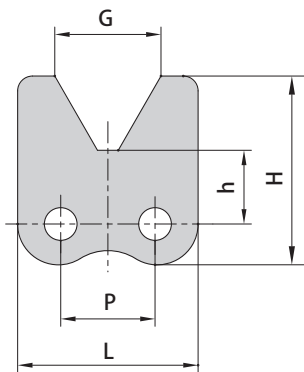
Donghua Chain No.	P mm	H mm	h mm	G mm
05BF6	8	17.55	16.95	21



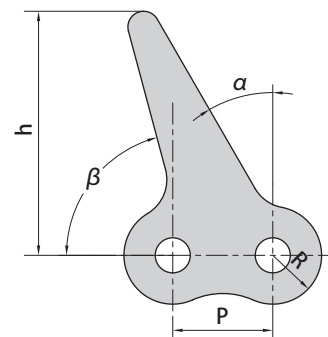
Donghua Chain No.	P mm	H mm	h mm	G mm
08B-D53	12.7	20	10.6	11.5



Donghua Chain No.	P mm	H mm	h mm	G mm
08BSK0F2	12.7	17	11.1	17

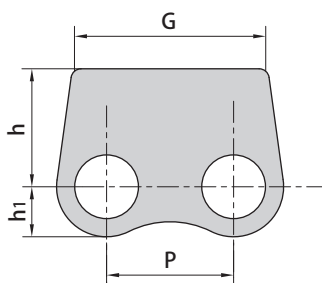


Donghua Chain No.	P mm	H mm	h mm	G mm	L mm
08BF61	12.7	25.4	9.9	14.3	24.3



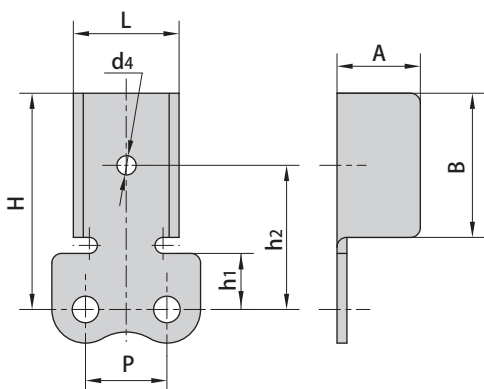
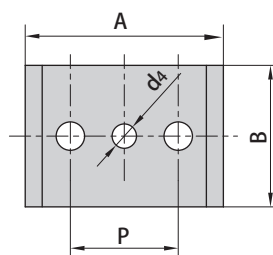
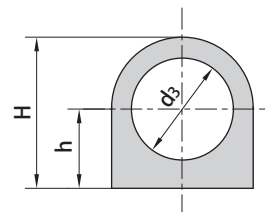
Donghua Chain No.	P mm	R mm	h mm	$\alpha$	$\beta$
08BF24	12.7	6.2	31.0	30°	75°

## Conveyor chain special attachments (B series)

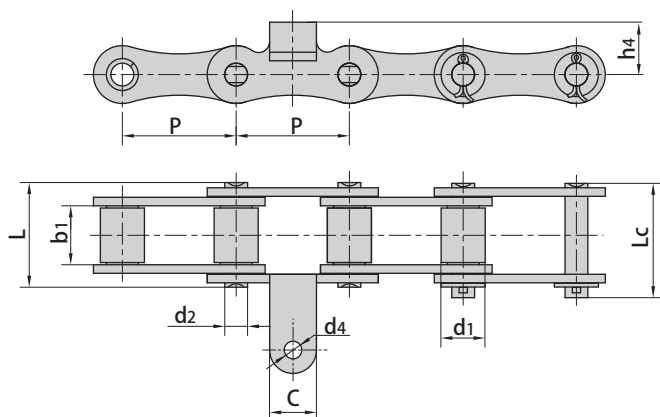
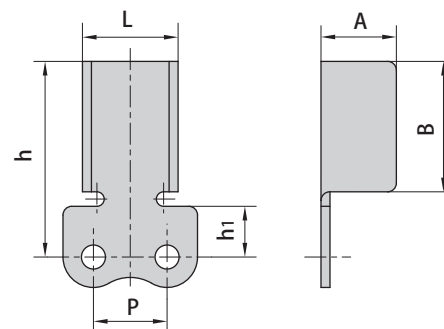


Donghua Chain No.	P	h <sub>1</sub>	h	G
	mm	mm	mm	mm
08BF37	12.7	5.0	11.8	20.0

Donghua Chain No.	P	h	H	A	B	d <sub>3</sub>	d <sub>4</sub>
	mm	mm	mm	mm	mm	mm	mm
12B-K188	19.05	14.0	26.7	35.0	25.0	18.0	4.3



Donghua Chain No.	P	h <sub>1</sub>	h <sub>2</sub>	H	A	B	d <sub>4</sub>	L
	mm	mm	mm	mm	mm	mm	mm	mm
16BF11	25.4	24.5	47.5	64.5	36.0	35.0	6.0	52.7



Donghua Chain No.	P	h <sub>1</sub>	h	A	B	L
	mm	mm	mm	mm	mm	mm
20BF2	31.75	30.0	70.0	43.0	35.0	65.15

Donghua Chain No.	Pitch		Roller diameter	Width between inner plates		Pin diameter		Pin length			Plate dimension			Ultimate tensile strength	Average tensile strength	Weight per meter
	P		d <sub>1</sub> max	b <sub>1</sub> min	d <sub>2</sub> max	L max	Lc max	C	h <sub>4</sub>	d <sub>4</sub>	Q min	Q <sub>0</sub> min	q			
	mm		mm	mm	mm	mm	mm	mm	mm	mm	kN/lbf	kN	kg/m			
41PF	41.3		16.0	21.1	8.28	38.5	42.2	17.0	19.0	6.4	48.0/10906	52.8	2.57			