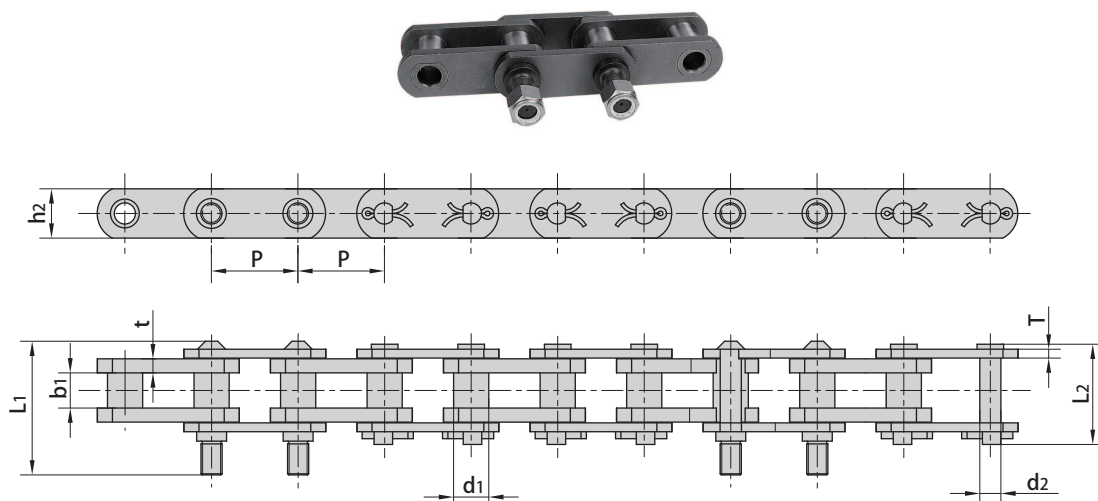
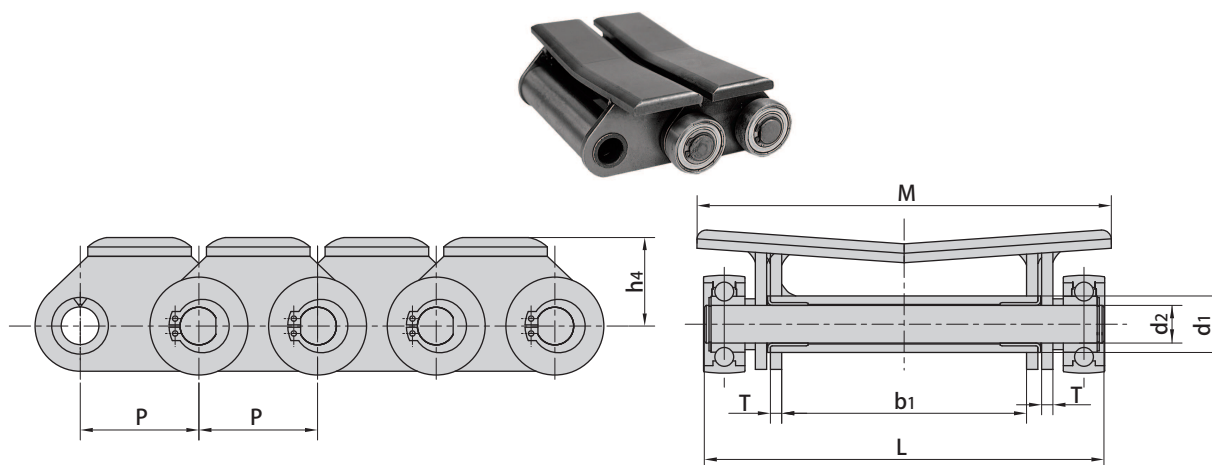


## 78PF1 conveyor chains



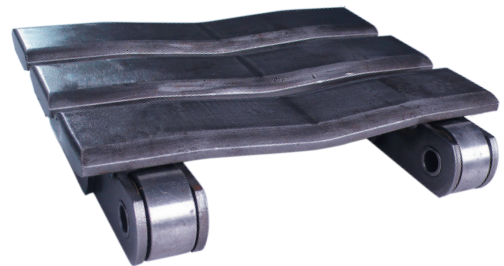
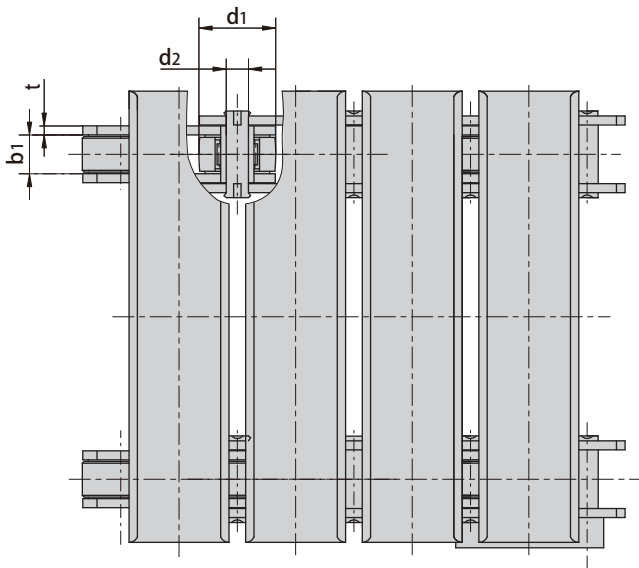
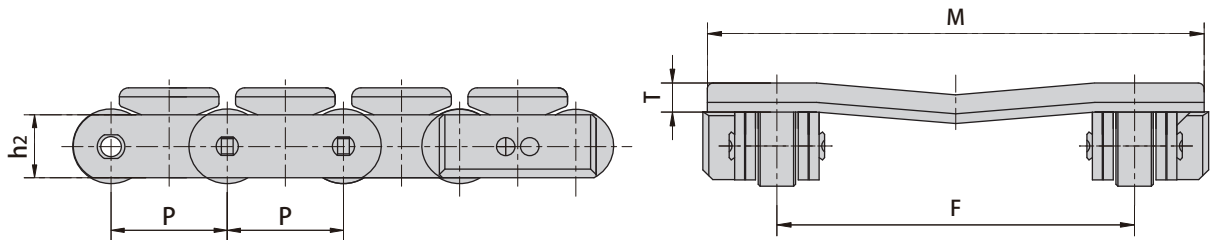
Donghua Chain No.	Pitch	Bush diameter	Width between inner plates	Pin diameter		Pin length		Plate depth	Plate thickness	Ultimate tensile strength	Average tensile strength	Weight per meter
	P	d1 max	b1 min	d2 max	L1 max	L2 max	h2 max	t/T max	Q min	Q0 min	q	
	mm	mm	mm	mm	mm	mm	mm	mm	kN/lbf	kN	kg/m	
78PF1	78.1	31.75	31.75	19.05	122.0	90.5	44.5	12.7/8.0	140.0/31818	166.88	14.22	

## Conveyor chains for paper mill



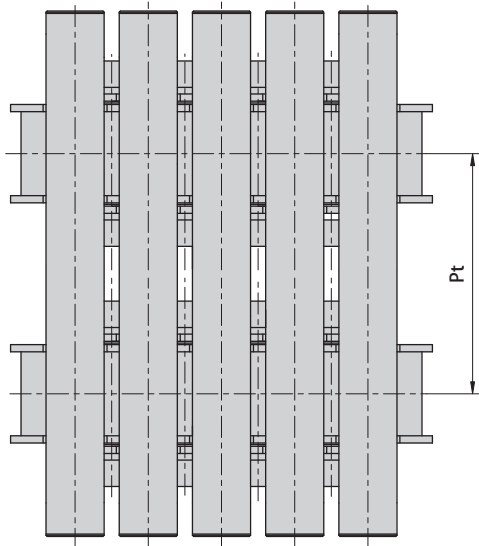
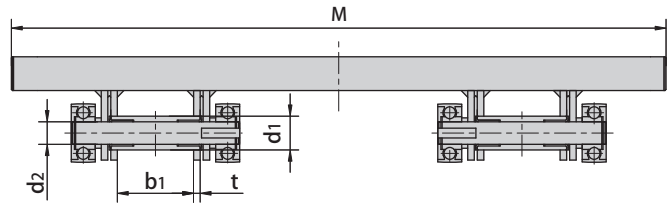
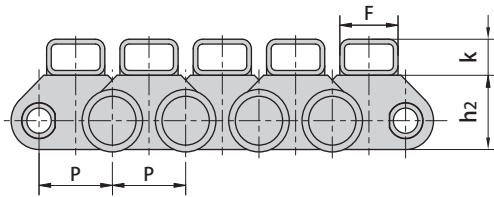
Donghua Chain No.	Pitch	Bush diameter	Width between inner plates	Pin diameter		Pin length	Plate thickness	Attachment dimension		Ultimate tensile strength	Average tensile strength
	P	d1 max	b1 min	d2 max	L max	T max	M	h4	Q min	Q0 min	
	mm	mm	mm	mm	mm	mm	mm	mm	kN/lbf	kN	
63PF2	63.0	30.0	130.0	20.0	213.2	6.0	220.0	50.0	160.0/36364	176.0	

## Conveyor chains for paper mill



Donghua Chain No.	Pitch	Width between inner plates	Pin diameter	Roller diameter	Plate depth	Plate thickness	Attachment dimension			Ultimate tensile strength
	P	b1 min	d2 max	d1 max	h2 max	t max	F	T	M	Q min
	mm	mm	mm	mm	mm	mm	mm	mm	mm	kN/lbf
P63F16	63.0	21.5	12.0	42.0	35.0	5.0	180.0	15.0	250.0	120.0/26994
P63F25	63.0	24.0	14.0	42.0	35.0	5.0	180.0	15.0	250.0	100.0/22495

## Conveyor chains for paper mill



Donghua Chain No.	Pitch	Width between inner plates	Pin diameter	Bush diameter	Plate depth	Plate thickness	Attachment dimension				Ultimate tensile strength
	P	b1 min	d2 max	d1 max	h2 max	t max	F	K	Pt	M	Q min
	mm	mm	mm	mm	mm	mm	mm	mm	mm	mm	kN/lbf
P63F23	63.0	70.0	20.0	52.0	61.8	6.0	50.0	30.0	688.0	1200.0	160.0/35993