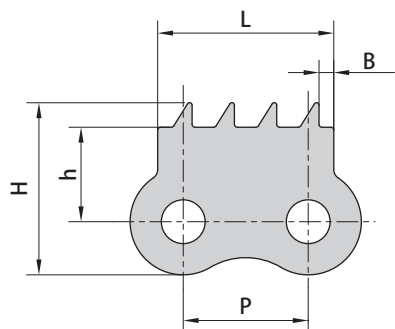
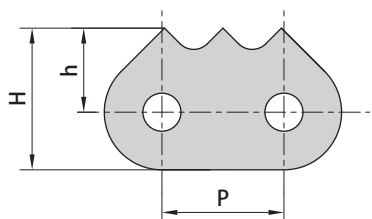


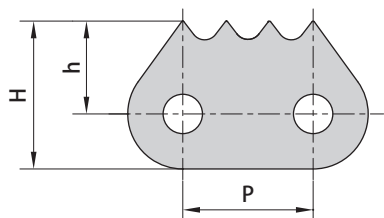
Sharp top chains



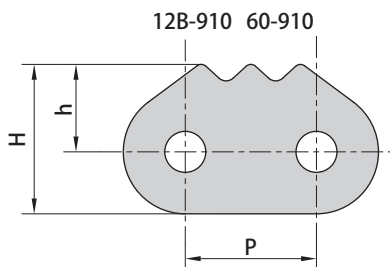
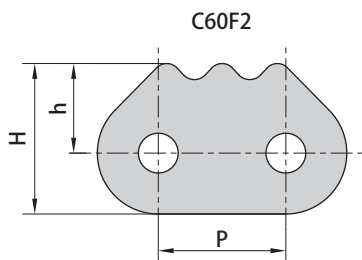
Donghua Chain No.	P	h	H	B	L
	mm	mm	mm	mm	mm
08B-940	12.7	9.6	17.5	1.5	17.9



Donghua Chain No.	P	h	H
	mm	mm	mm
16AF1	25.4	17.5	29.5
C16A-3PEP	25.4	17.4	29.0
C16BF3	25.4	18.7	29.2



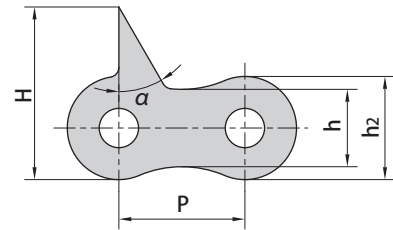
Donghua Chain No.	P	h	H
	mm	mm	mm
12BF3	19.05	13.5	21.5
C16A-1170	25.40	16.5	28.0
16B-1170	25.40	16.0	26.5
16B-1172	25.40	15.0	25.5
C24B-4STC	38.10	18.3	35.0



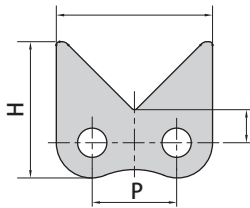
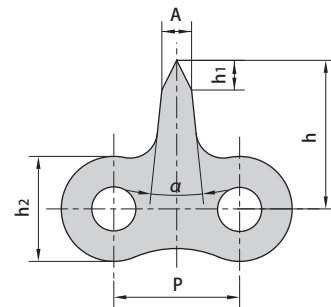
Donghua Chain No.	P	h	H
	mm	mm	mm
12B-910	19.05	13.70	21.70
60-910	19.05	12.70	21.70
C60F2	19.05	13.38	22.48

Sharp top chains

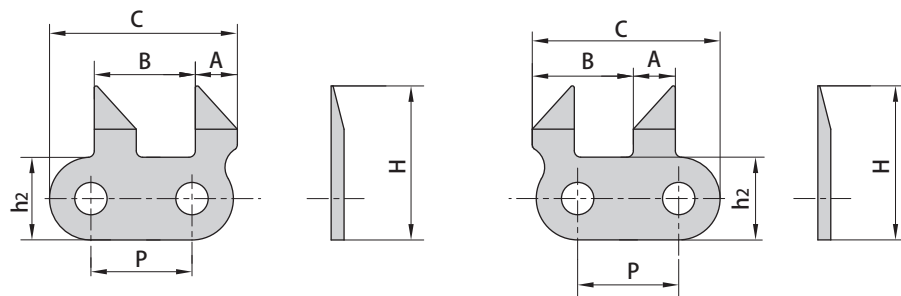
Donghua Chain No.	P	h	h ₂	H	α
	mm	mm	mm	mm	
08A-D2-F1	12.7	7.8	10.4	17.4	30°
08AF34	12.7	7.8	10.4	17.9	30°



Donghua Chain No.	P	h ₁	h ₂	h	A	α
	mm	mm	mm	mm	mm	
08BF21	12.7	3.0	10.6	15.0	3.0	12°

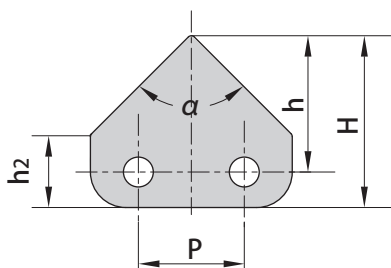


Donghua Chain No.	P	H	h	G
	mm	mm	mm	mm
08BF73	12.7	20.5	5	23.5

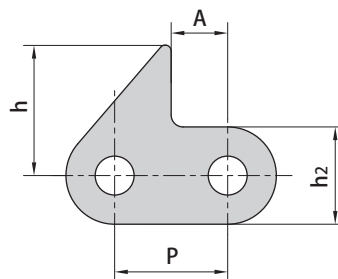


Donghua Chain No.	P	A	B	C	h ₂	H
	mm	mm	mm	mm	mm	mm
10AF8	15.875	6.6	15.875	29.5	13	24.2

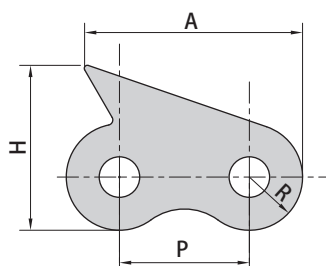
Sharp top chains



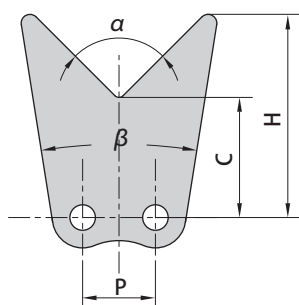
Donghua Chain No.	P	H	h	h ₂	α
	mm	mm	mm	mm	
41F6	12.7	20.6	16.35	8.7	90°



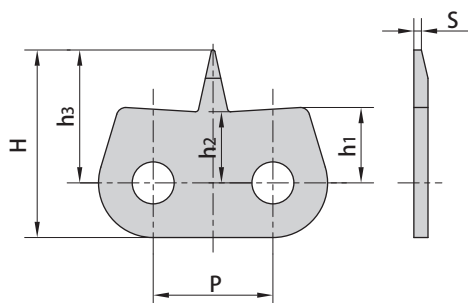
Donghua Chain No.	P	h ₂	h	A
	mm	mm	mm	mm
06BF1	9.525	8.2	11.0	4.76
06BF37	9.525	8.2	10.0	4.76
08AF41	12.700	10.4	11.8	6.35



Donghua Chain No.	P	R	H	A
	mm	mm	mm	mm
08BF44	12.7	5.3	16.30	23.30
08AF8	12.7	5.2	16.13	21.34

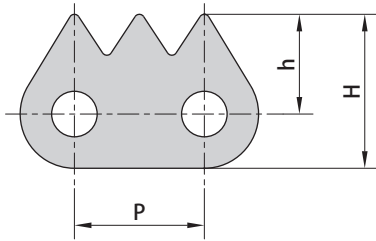


Donghua Chain No.	P	C	H	α	β
	mm	mm	mm		
428HJF1	12.7	21.5	36.15	90°	18°
428HJF2	12.7	14.5	33.60	90°	34°



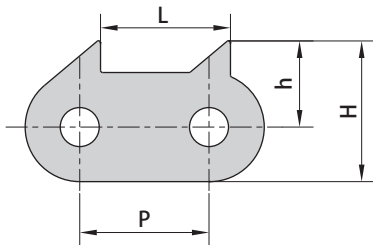
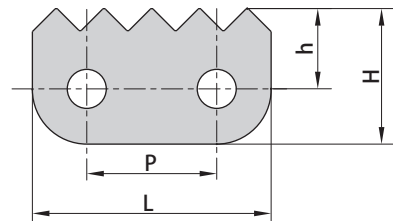
Donghua Chain No.	P	h ₁	h ₂	h ₃	H	s
	mm	mm	mm	mm	mm	mm
08BF11	12.7	8.0	7.8	14.1	19.9	0.8

Sharp top chains



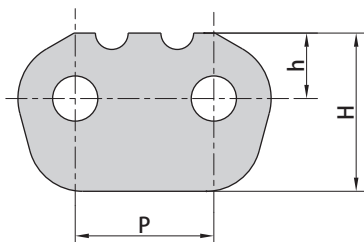
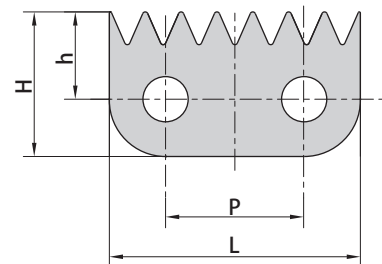
Donghua Chain No.	P mm	h mm	H mm
08BF71	12.7	9.75	15.05

Donghua Chain No.	P mm	h mm	H mm	L mm
C10B-5STCF1	15.875	11.3	18.8	30.9
10AF42	15.875	11.5	19.0	30.9
12B-911	19.050	11.9	20.0	35.0



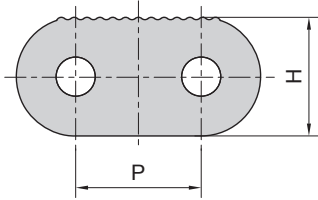
Donghua Chain No.	P mm	h mm	H mm	L mm
C12B-9010	19.05	13.0	21.0	19.05
C12B-940	19.05	13.2	22.3	19.75
C16B-1160	25.40	10.5	27.5	25.40
C16B-1161	25.40	10.5	27.5	25.40
C16A-1160	25.40	18.0	29.5	25.40

Donghua Chain No.	P mm	h mm	H mm	L mm
16B-1187	25.4	16.0	26.5	46

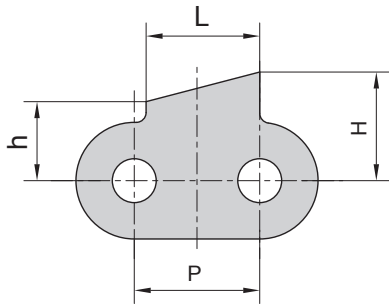


Donghua Chain No.	P mm	h mm	H mm
16BF45	25.4	12.0	29.0

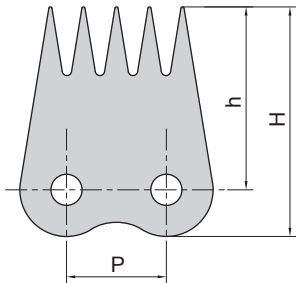
Sharp top chains



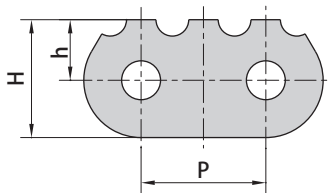
Donghua Chain No.	P mm	H mm
C40-13STC	12.7	12.0



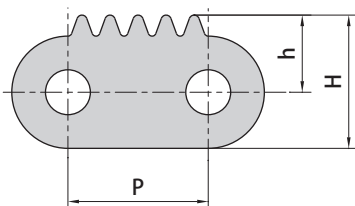
Donghua Chain No.	P mm	h mm	H mm	L mm
08BF128	12.7	8.0	11.0	11.5



Donghua Chain No.	P mm	h mm	H mm
12AF91	19.05	34.9	43.8

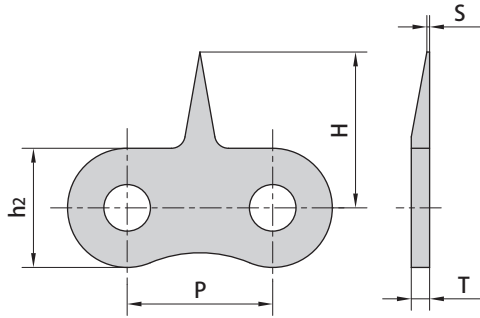


Donghua Chain No.	P mm	h mm	H mm
60-911	19.05	9.25	18.00
60-912	19.05	9.20	17.95

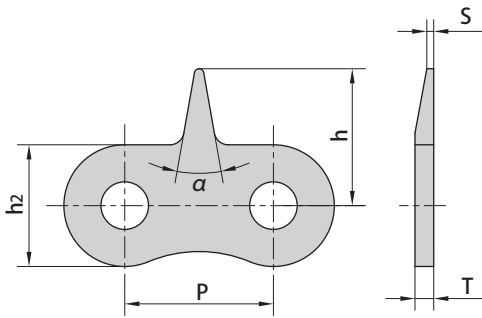


Donghua Chain No.	P mm	h mm	H mm
LL1044F1	15.875	8.73	15.08

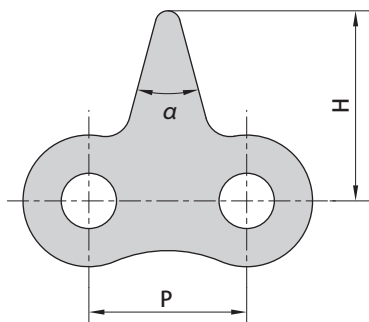
Sharp top chains



Donghua Chain No.	P mm	h ₂ mm	H mm	S mm	T mm
08AF29	12.700	10.60	15.6	-	1.50
08BF90	12.700	10.60	17.0	0.3	1.60
10AF15	15.875	15.09	17.0	-	2.03
10AF2	15.875	13.00	17.0	0.3	2.03
10AF23	15.875	13.00	20.8	0.3	2.03
10AF48	15.875	13.00	16.9	-	2.03
10BF50	15.875	13.70	17.0	0.3	1.70

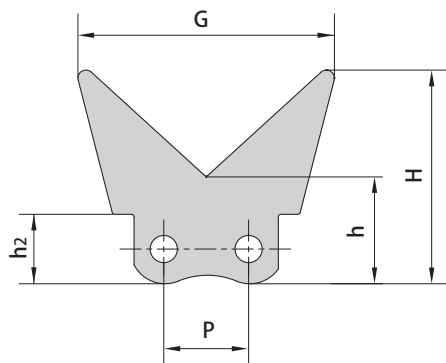


Donghua Chain No.	P mm	h ₂ mm	h mm	T mm	S mm	α
08BF25	12.70	10.6	15.6	1.60	-	30°
08BF29	12.70	10.6	14.5	1.60	0.8	30°
08BF30	12.70	10.6	14.5	1.60	0.3	30°
08BF35	12.70	10.6	21.5	1.60	0.6	30°
08BF67	12.70	10.6	16.1	1.60	0.3	30°
12B-1STCF1	19.05	15.0	19.0	1.85	-	30°

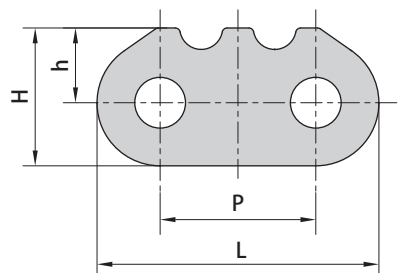


Donghua Chain No.	P mm	H mm	α
06BF39	9.525	11.00	30°
08AF10	12.700	15.60	30°
08BF30	12.700	14.50	30°
08BF38	12.700	14.60	40°
08BF5	12.700	15.30	30°
08BF51	12.700	14.00	50°
08BF56	12.700	14.40	30°
08BF86	12.700	15.00	50°
08BSSF11	12.700	14.60	40°
10AF7	15.875	15.88	21°
10BF40	15.875	17.40	25°
12A-1STCF1	19.050	25.00	28°
12B-1STCF1	19.050	19.00	30°
16AF44	25.400	31.80	50°
20A-1STCF1	31.750	53.00	82.1°

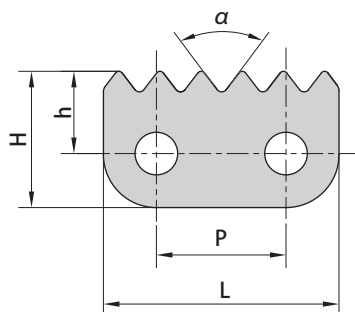
Sharp top chains



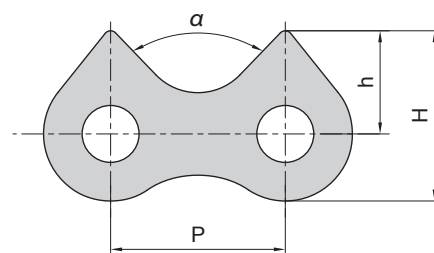
Donghua Chain No.	P	H	h	h ₂	G
	mm	mm	mm	mm	mm
50F21	15.875	40	20	13	48



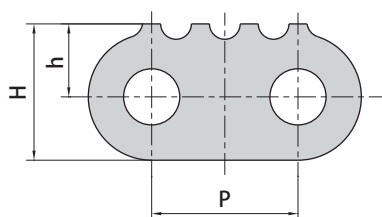
Donghua Chain No.	P	L	h	H
	mm	mm	mm	mm
16B-1180	25.4	46.0	12.2	22.5



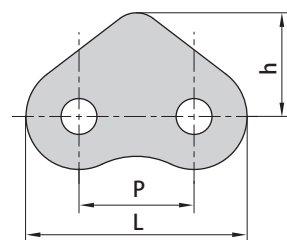
Donghua Chain No.	P	L	h	H	α
	mm	mm	mm	mm	
25HF5-6STC	6.35	5.8	8.8	12.2	90°
16B-1185	25.40	46.0	16.0	26.5	75°
16B-6STC	25.40	46.0	16.0	26.5	73.4°



Donghua Chain No.	P	h	H	α
	mm	mm	mm	
16B-2STCF1	25.40	15.0	24.75	88°
20A-2STCF1	31.75	23.0	35.95	80°
20A-2STCF3	31.75	23.0	35.95	82°

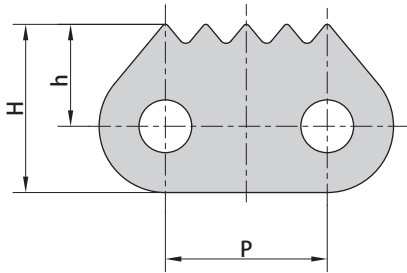


Donghua Chain No.	P	h	H
	mm	mm	mm
24B-1810	38.1	19	35.5
120F6	38.1	21	38.5

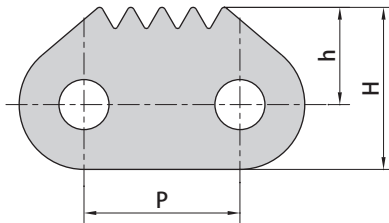


Donghua Chain No.	P	L	h
	mm	mm	mm
16BF6	25.4	46.0	30.0
16BF5	25.4	48.8	22.9

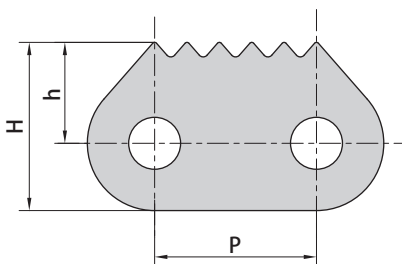
Sharp top chains



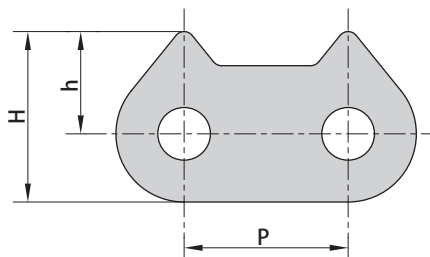
Donghua Chain No.	P	h	H
	mm	mm	mm
C12BF56-STC	19.05	13.0	22.0
16A-1171	25.40	16.0	26.4
C16A-5PEP	25.40	17.4	29.0
C16AF2	25.40	17.5	29.5
C16A-5PEPF1	25.40	17.3	29.5
C16BF2	25.40	18.7	29.2
16BF24	25.40	16.0	26.4
26BF29	25.40	15.9	26.4
C24B-1831	38.10	22.5	39.0
24A-1-STC	38.10	21.0	38.5



Donghua Chain No.	P	h	H
	mm	mm	mm
C20BF9	31.75	19.8	33.0

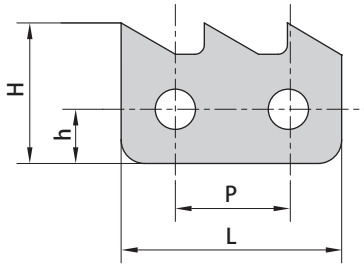


Donghua Chain No.	P	h	H
	mm	mm	mm
20BF8	31.75	19.8	33.0
20B-1310	31.75	19.8	33.0
C24B-6STCF1	38.10	23.5	40.0

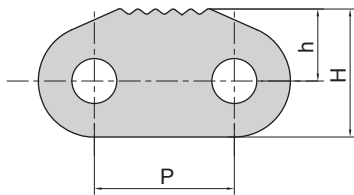


Donghua Chain No.	P	h	H
	mm	mm	mm
20B-1350	31.75	19.8	33.0

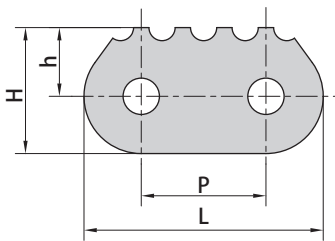
Sharp top chains



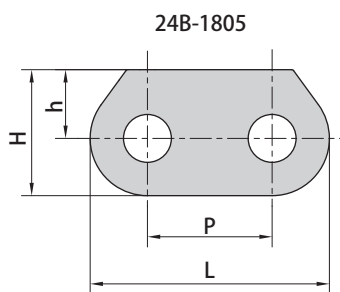
Donghua Chain No.	P	L	h	H
	mm	mm	mm	mm
20AF1	31.75	57.2	14.75	35.84



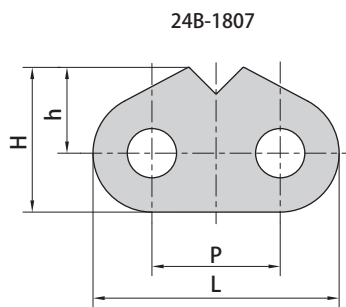
Donghua Chain No.	P	h	H
	mm	mm	mm
20B-6STC	31.75	16.5	29.2



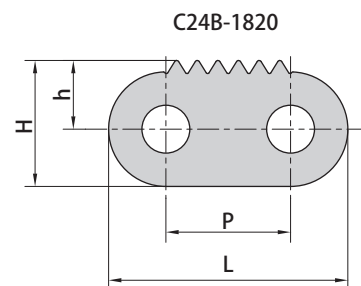
Donghua Chain No.	P	L	h	H
	mm	mm	mm	mm
C20A-1-4STC	31.75	46.75	18.3	33.3
120-1802	38.10	73.10	21.0	38.5
24B-1809	38.10	73.10	21.0	38.5



24B-1805



24B-1807

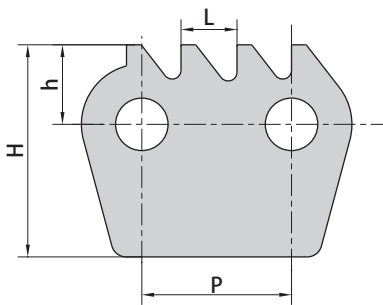
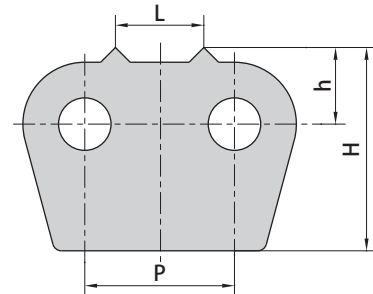


C24B-1820

Donghua Chain No.	P	L	h	H
	mm	mm	mm	mm
24B-1805	38.1	73.1	21.0	38.5
24B-1807	38.1	73.1	25.5	43.0
C24B-1820	38.1	73.1	21.0	38.5

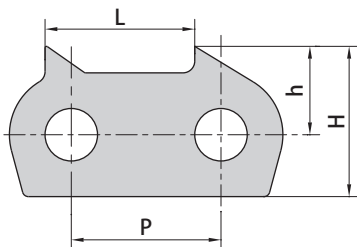
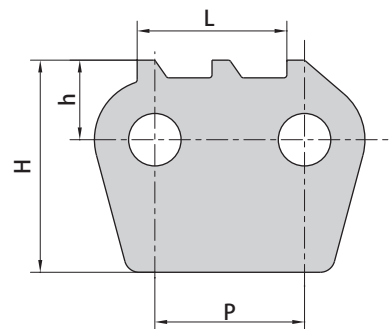
Sharp top chains

Donghua Chain No.	P	h	H	L
	mm	mm	mm	mm
32BF4	50.8	26	70.0	30



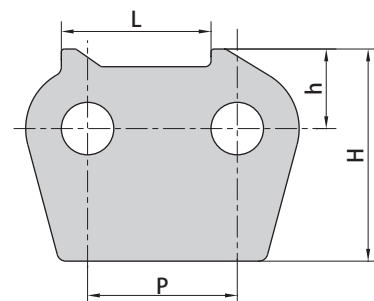
Donghua Chain No.	P	h	H	L
	mm	mm	mm	mm
32B-1875	50.8	27	72.0	19.0
32BF20-1875	50.8	30	74.0	13.5

Donghua Chain No.	P	h	H	L
	mm	mm	mm	mm
32B-1876	50.8	27	72.0	50.8

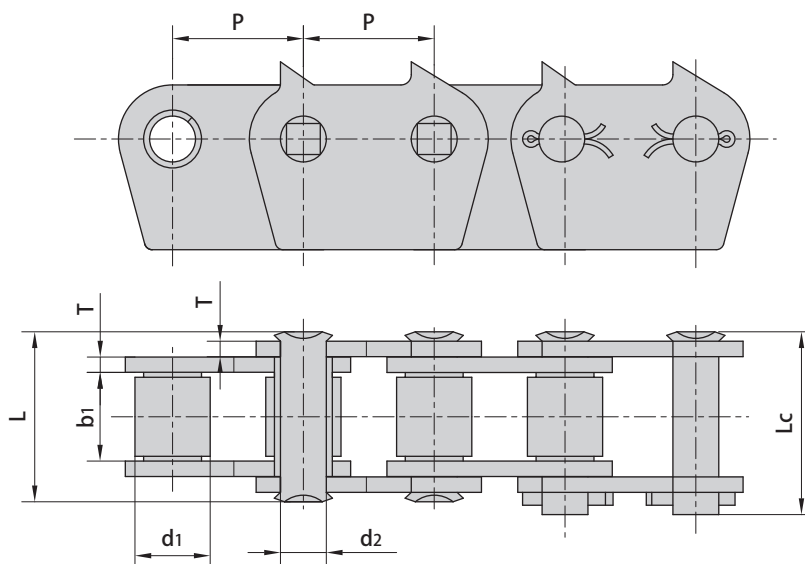


Donghua Chain No.	P	h	H	L
	mm	mm	mm	mm
32B-1877	50.8	30	51	50.8

Donghua Chain No.	P	h	H	L
	mm	mm	mm	mm
32B-1878	50.8	27	72	50.8

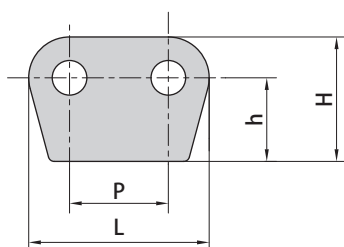


Sharp top chains

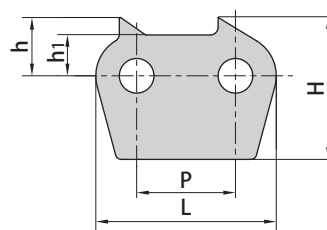


Donghua Chain No.	Pitch	Roller diameter	Width between inner plates	Pin diameter	Pin length		Plate thickness	Ultimate tensile strength	Average tensile strength	Weight per meter
	P	d1 max	b1 min	d2 max	L max	Lc max	T max	Q min	Q0	q
	mm	mm	mm	mm	mm	mm	mm	kN/lbf	kN	kg/m
32B-1-1872	50.8	29.21	33.0	17.81	66.0	71.0	6.0	250.0/56818	275.0	13.54

32B-1872

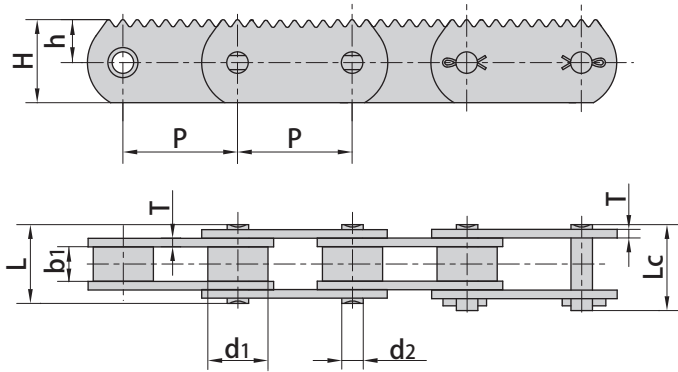


32B-1874 32B-1900F1
32BF15 C32B-1874F1



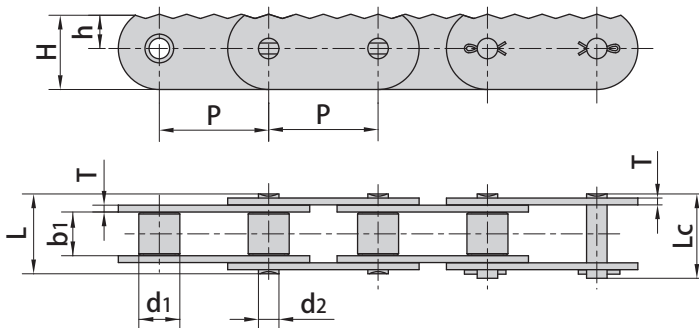
Donghua Chain No.	P	L	h1	h	H
	mm	mm	mm	mm	mm
32B-1872	50.8	92.8	-	43.0	64.0
32B-1874	50.8	92.8	21.0	30.0	73.0
32B-1900F1	50.8	92.8	21.0	30.0	75.0
32BF15	50.8	91.8	20.0	45.0	75.0
C32B-1874F1	50.8	92.8	21.0	40.0	83.0

Sharp top chains



Donghua Chain No.	P	h	H
	mm	mm	mm
P80	80.0	30	58

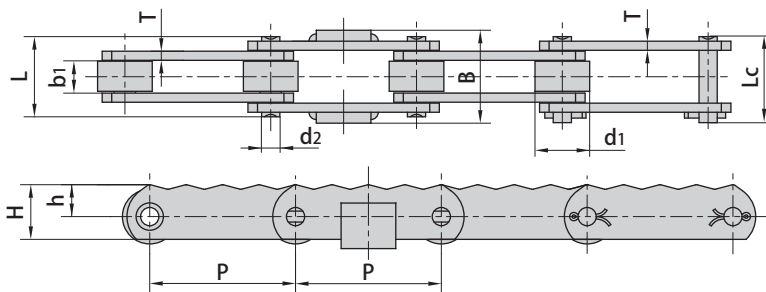
Donghua Chain No.	Pitch	Roller diameter	Width between inner plates	Pin diameter	Pin length		Plate thickness	Ultimate tensile strength	Average tensile strength	Weight per meter
	P	d1 max	b1 min	d2 max	L max	Lc max	T max	Q min	Q0	q
	mm	mm	mm	mm	mm	mm	mm	kN/lbf	kN	kg/m
P80	80.0	42.0	24.0	15.0	55.0	60.0	6.0	250.0/56818	275.0	11.3



Donghua Chain No.	P	h	H
	mm	mm	mm
P80F3	80.0	25	55
P80F32	80.0	20	40

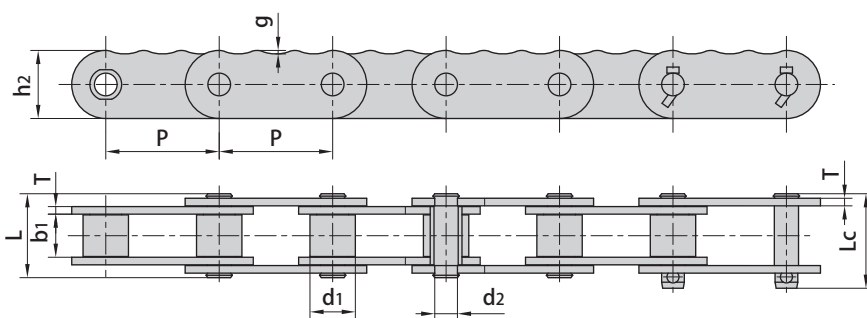
Donghua Chain No.	Pitch	Roller diameter	Width between inner plates	Pin diameter	Pin length		Plate thickness	Ultimate tensile strength	Average tensile strength	Weight per meter
	P	d1 max	b1 min	d2 max	L max	Lc max	T max	Q min	Q0	q
	mm	mm	mm	mm	mm	mm	mm	kN/lbf	kN	kg/m
P80F3	80.0	30.0	32.0	15.0	58.6	62.6	5.0	98.0/20909	107.0	9.12
P80F32	80.0	30.0	30.0	15.0	63.0	72.0	6.0	112/25194	123.2	7.28

Sharp top chains

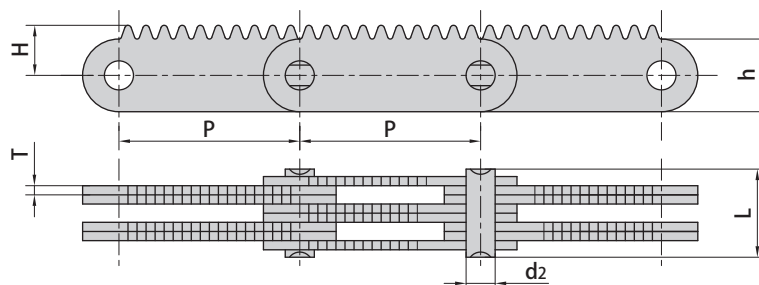


Donghua Chain No.	P	h	H	B
	mm	mm	mm	mm
P80F2	80.0	17.5	30.0	51

Donghua Chain No.	Pitch	Roller diameter	Width between inner plates	Pin diameter	Pin length		Plate thickness	Ultimate tensile strength	Average tensile strength	Weight per meter
	P	d1 max	b1 min	d2 max	L max	Lc max	T max	Q min	Q0	q
	mm	mm	mm	mm	mm	mm	mm	kN/lbf	kN	kg/m
P80F2	80.0	30.0	18.0	10.0	44.6	48.3	5.0	61.74/14030	70.0	4.15



Donghua Chain No.	Pitch	Roller diameter	Width between inner plates	Pin diameter	Pin length		Plate dimension		Plate thickness	Ultimate tensile strength
	P	d1 max	b1 min	d2 max	L max	Lc max	h2	g	T max	Q min
	mm	mm	mm	mm	mm	mm	mm	mm	mm	kN/lbf
P150F77	150.0	60.0	57.0	30.0	114.0	128.0	90.0	4.6	10.0	666.4/149812



Donghua Chain No.	Pitch	Plate lacing	Pin diameter	Pin length	Plate dimension		Distance from hole center to tooth	Ultimate tensile strength	Weight per meter
	P		d2 max	L max	h max	T max	H max	Q min	q
	mm		mm	mm	mm	mm	mm	kN/lbf	kg/m
F3144F1	31.60	4×4	5.08	16.1	12.7	1.6	8.75	40.0/8992	0.942
F2544F1	25.28	4×4	5.08	16.1	12.7	1.6	8.75	40.0/8992	0.987