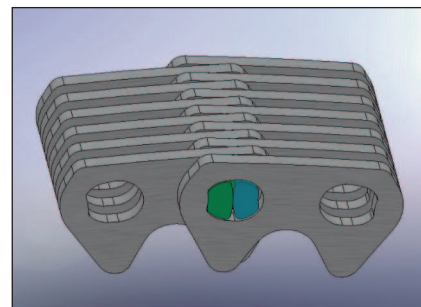
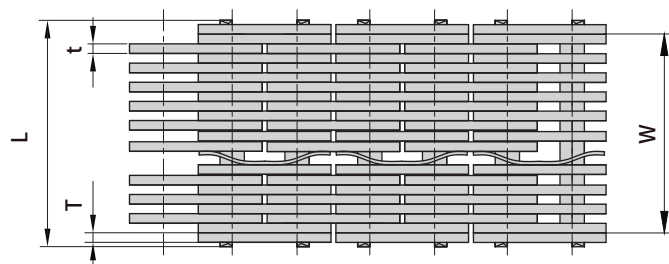
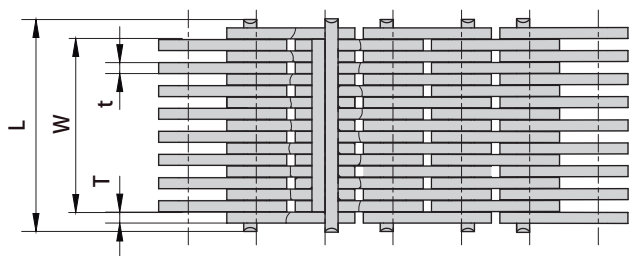
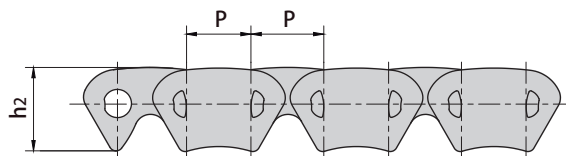
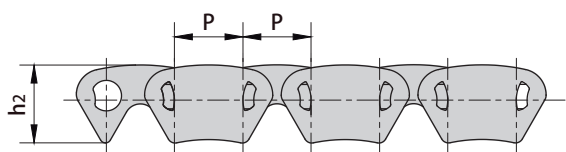


Rocker joint type silent chains

Rocker joint type silent chain is mainly used for four-wheel drive transfer case and gearbox drive system, which is the core component of the drive system. Special rocker joint pin dual-meshing design makes its structure different from the ordinary round pin type silent chain and thus reducing the polygon effect and noise effectively. This chain has superior performances such as high strength, high wear resistance and transmission of high torque in many conditions etc..



Rocker joint type silent chains



Donghua Chain No.	Pitch	Width Between Guides	Pin length	Plate depth	Plate thickness		Guide type	Number of plate	Ultimate tensile strength	Weight per meter
	P	W	L max	h2 max	t max	T max			Q min	q
	mm	mm	mm	mm	mm	mm			kN/lbf	kg/m
HV3F3-8X9W	9.525	23.25	29.20	10.90	1.55	1.55	Outside	17(8X9)	36/8096	1.5
SC180	11.113	31.41	36.33	13.52	1.55	1.55	Outside	21(9X12)	72/16193	2.4